

COCONUT POINT - AREA 3, US 41 BUFFER NORTH OF PELICAN COLONY BLVD					
EXISTING TREE TABULATION					
ID	QTY	NATIVE	COMMON NAME	BOTANICAL NAME	SPECIFICATIONS
BB1	6	NO	Black Olive 'Shady Lady'	Bucida busera "Shady Lady"	12'-14' hgt x 7'-8" spr., 3.5" caliper
BB2	2	NO	Black Olive 'Shady Lady'	Bucida busera "Shady Lady"	18' ght. X 10' spr., 7" caliper
CH	2	NO	European Fan Palm	Chamaerops humilis	45 gal.
CN1	3	NO	Coconut Palm	Cocos nucifera 'Green Malayan'	2 @ 5' c.t., 2 @ 6' c.t., & 2 @ 8'-9' c.t.
IC	15	YES	Dahoon Holly	Ilex cassine	10' hgt x 4' spr., 2" caliper
MC	3	YES	Wax Myrtle	Myrica cerifera	10' hgt x 4' spr., 2" caliper
QV1	10	YES	Live Oak	Quercus virginiana	14'-16' hgt x 8'-9' spr., 7" caliper
QV2	6	YES	Live Oak	Quercus virginiana	20' hgt x 12'-14' spr., 7" caliper
SP	32	YES	Sabal Palmetto	Sabal Palmetto	10'-16' c.t., staggred, booted

**US 41 BUFFER REQUIREMENTS (TREES)**

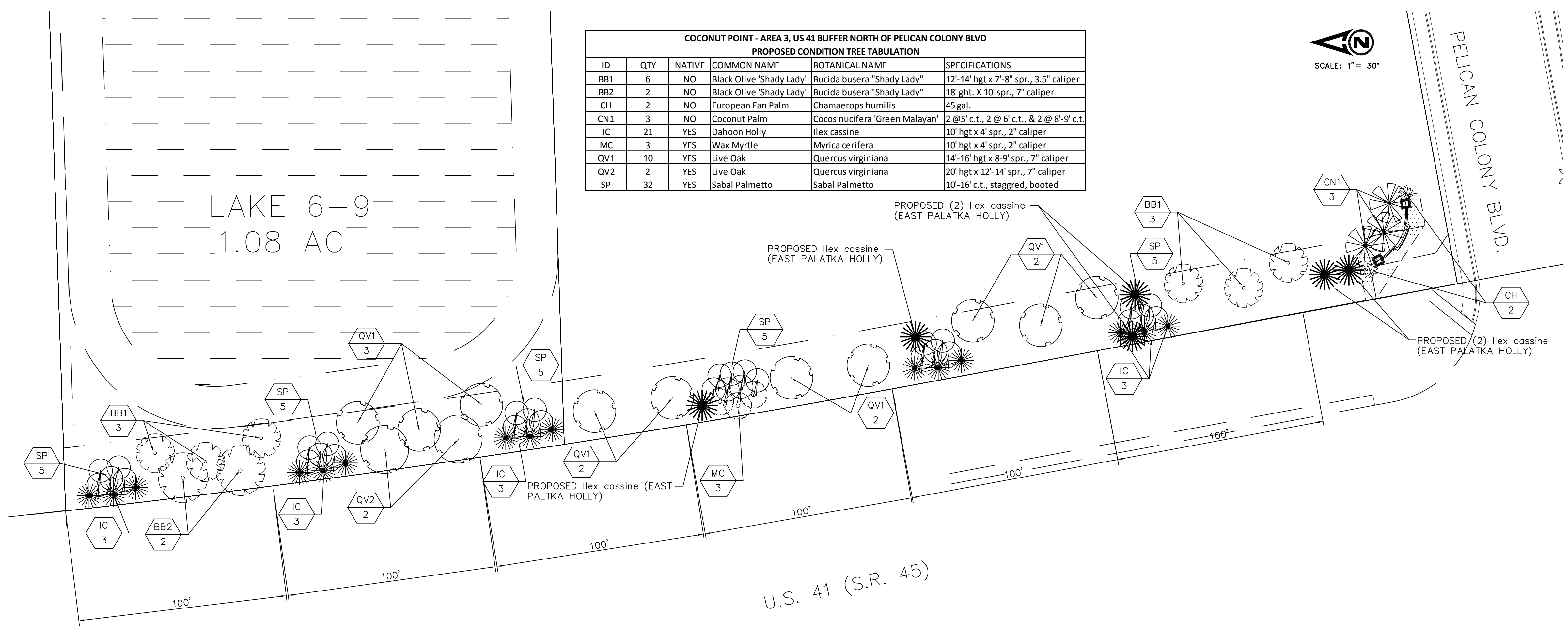
PER Z-02-009, CONDITION 6, A 30 FEET WIDE BUFFER IS REQUIRED ALONG THE ENTIRE LENGTH OF US 41. THE BUFFER MUST BE PLANTED WITH 10 TREES PER 100 FEET; MINIMUM 10-FEET HEIGHT, 2-INCH CALIPER, WITH 4-FEET SPREAD OR MINIMUM 10-FEET CLEAR TRUNK FOR PALMS. A MINIMUM OF 50% MUST BE CANOPY TREES.

BUFFER LENGTH (N. OF PELICAN COLONY): 631 FEET

TREES REQUIRED: 631 FEET X 10 / 100 FEET = 63 TREES  
MAX PALMS = 31 TREES

EXISTING TREES (PROVIDED): 81 TREES, 37 PALMS

**EXISTING CONDITIONS**



COCONUT POINT - AREA 3, US 41 BUFFER NORTH OF PELICAN COLONY BLVD					
PROPOSED CONDITION TREE TABULATION					
ID	QTY	NATIVE	COMMON NAME	BOTANICAL NAME	SPECIFICATIONS
BB1	6	NO	Black Olive 'Shady Lady'	Bucida busera "Shady Lady"	12'-14' hgt x 7'-8" spr., 3.5" caliper
BB2	2	NO	Black Olive 'Shady Lady'	Bucida busera "Shady Lady"	18' ght. X 10' spr., 7" caliper
CH	2	NO	European Fan Palm	Chamaerops humilis	45 gal.
CN1	3	NO	Coconut Palm	Cocos nucifera 'Green Malayan'	2 @ 5' c.t., 2 @ 6' c.t., & 2 @ 8'-9' c.t.
IC	21	YES	Dahoon Holly	Ilex cassine	10' hgt x 4' spr., 2" caliper
MC	3	YES	Wax Myrtle	Myrica cerifera	10' hgt x 4' spr., 2" caliper
QV1	10	YES	Live Oak	Quercus virginiana	14'-16' hgt x 8'-9' spr., 7" caliper
QV2	2	YES	Live Oak	Quercus virginiana	20' hgt x 12'-14' spr., 7" caliper
SP	32	YES	Sabal Palmetto	Sabal Palmetto	10'-16' c.t., staggred, booted

**US 41 BUFFER REQUIREMENTS (TREES)**

PER Z-02-009, CONDITION 6, A 30 FEET WIDE BUFFER IS REQUIRED ALONG THE ENTIRE LENGTH OF US 41. THE BUFFER MUST BE PLANTED WITH 10 TREES PER 100 FEET; MINIMUM 10-FEET HEIGHT, 2-INCH CALIPER, WITH 4-FEET SPREAD OR MINIMUM 10-FEET CLEAR TRUNK FOR PALMS. A MINIMUM OF 50% MUST BE CANOPY TREES.

BUFFER LENGTH (N. OF PELICAN COLONY): 631 FEET

TREES REQUIRED: 631 FEET X 10 / 100 FEET = 63 TREES  
MAX PALMS = 31 TREES

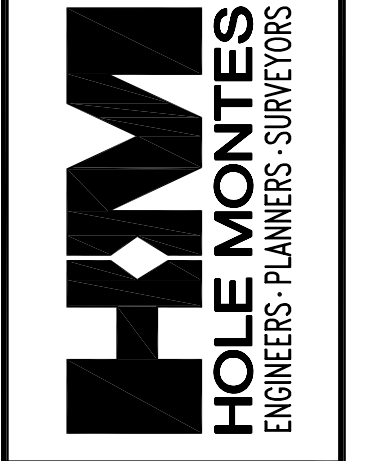
EXISTING TREES (PROVIDED): 81 TREES, 37 PALMS

**PROPOSED PLAN**

REVISIONS	NUMBER	DATE

**COCONUT POINT - AREA 3**  
**US 41 BUFFER REVISIONS PLAN**  
LANDSCAPE PLAN

6200 Whiskey Creek Drive  
Fort Myers, FL 33919  
Phone : (239) 985-1200  
Florida Certificate of Authorization No.1772  
Naples - Fort Myers - Venice - Englewood



DESIGNED BY: TA	DATE: 11/10
DRAWN BY: TW	DATE: 11/10
CHECKED BY: TA	DATE: 11/10
VERTICAL SCALE: 1" = 30'	

DRAWING NO.	1288-3
PROJECT NO.	10.070-D
REFERENCE NO.	1070LS2
SHEET NO.	3 OF 3