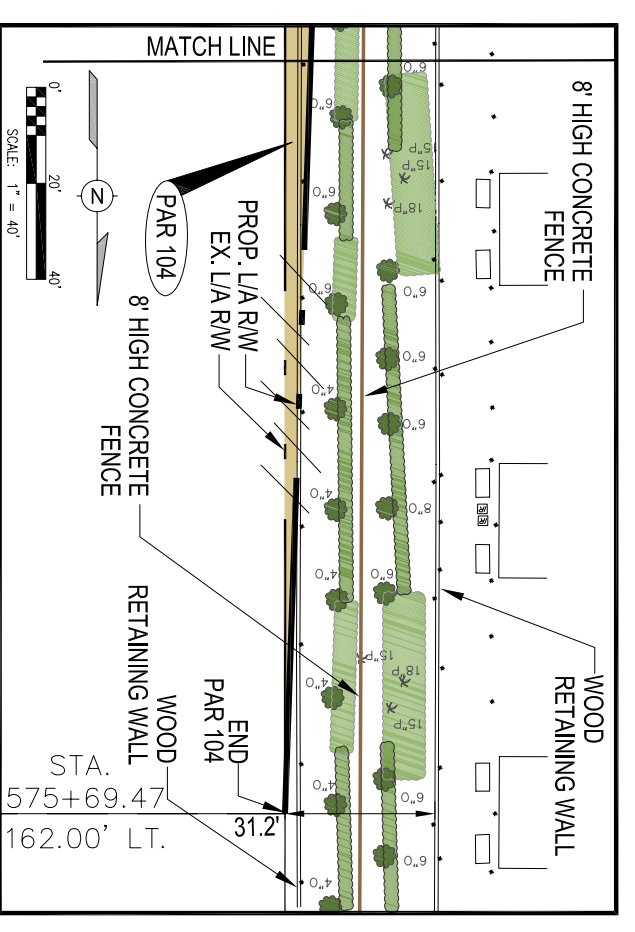


S.R. 93 (I-75)



CURVE TABLE		ARC TABLE		CHORD BEARING	
CURVE	DELTA	RADIUS	ARC LENGTH	CHORD LENGTH	CHORD BEARING
C1	00°22'55"	23873.5'	157.19'	157.19'	N 15°57'29" W
C2	01°12'45"	23428.5'	498.74'	495.73'	N 16°20'40" W

AREA TABLE		
PARENT TRACT PAR 104 *	(7,024 SF)	67,581 AC
REMAINDER *		0.161 AC
		67,420 AC

* SOURCE: RE ANALYSIS - COMMERCIAL, LLC

LINE TABLE		
LINE	LENGTH	BEARING
L1	24.58'	S 90°00'00" E

LEGEND

- EXISTING PROPERTY LINE (P)
- EXISTING LIMITED ACCESS (L/A) RIGHT-OF-WAY
- PROPOSED LIMITED ACCESS (L/A) RIGHT-OF-WAY
- EXISTING LOT LINE
- PROPOSED ACQUISITION AREA
- EXISTING SAWGRASS LANDSCAPING
- IRRIGATION CONTROL BOX
- EXISTING SHRUB HEDGE
- SPRINKLER HEAD
- OAK TREE AND SIZE, DBH (64 TREES IN BUFFER)
- PALM TREE AND SIZE, DBH (23 TREES IN BUFFER)
- OAK TREE TO BE REMOVED (18 TREES FROM BUFFER)

NOTE: 1) DRAWING AND PARCEL INFORMATION SOURCE: FDOT R/W MAP, DATED 10.12.05, REV. 09.13.06; CROSS SECTIONS CREATED BY PSS&I, DATED 1.15.07.
2) SPECIFIC PURPOSE SURVEY CREATED BY NORTHWEST ENGINEERING, INC., DATED 12.14.07; SIGNED 12.20.07.

#	DATE	REVISION
0	10.29.07	ORIGINAL DRAWING CREATION