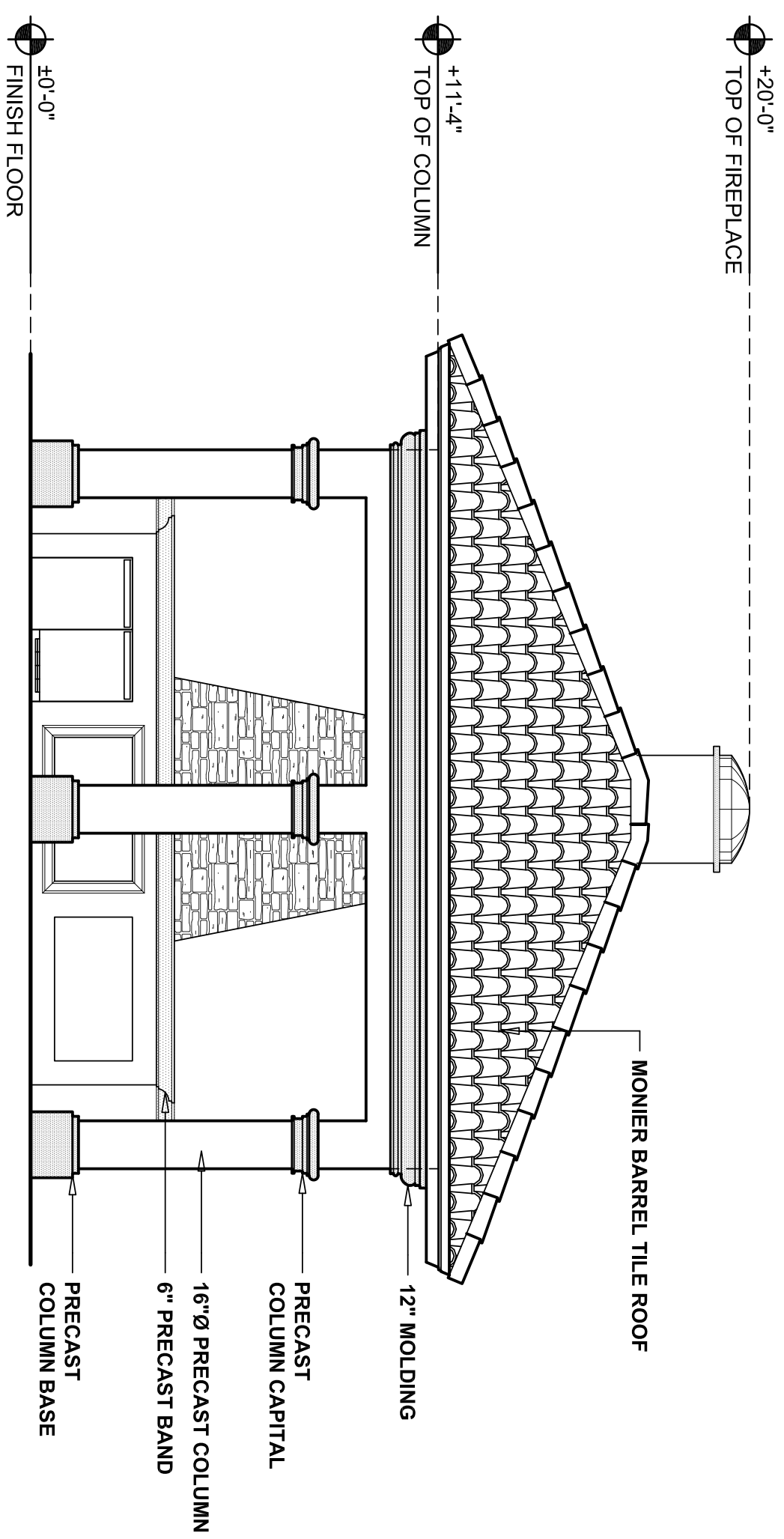
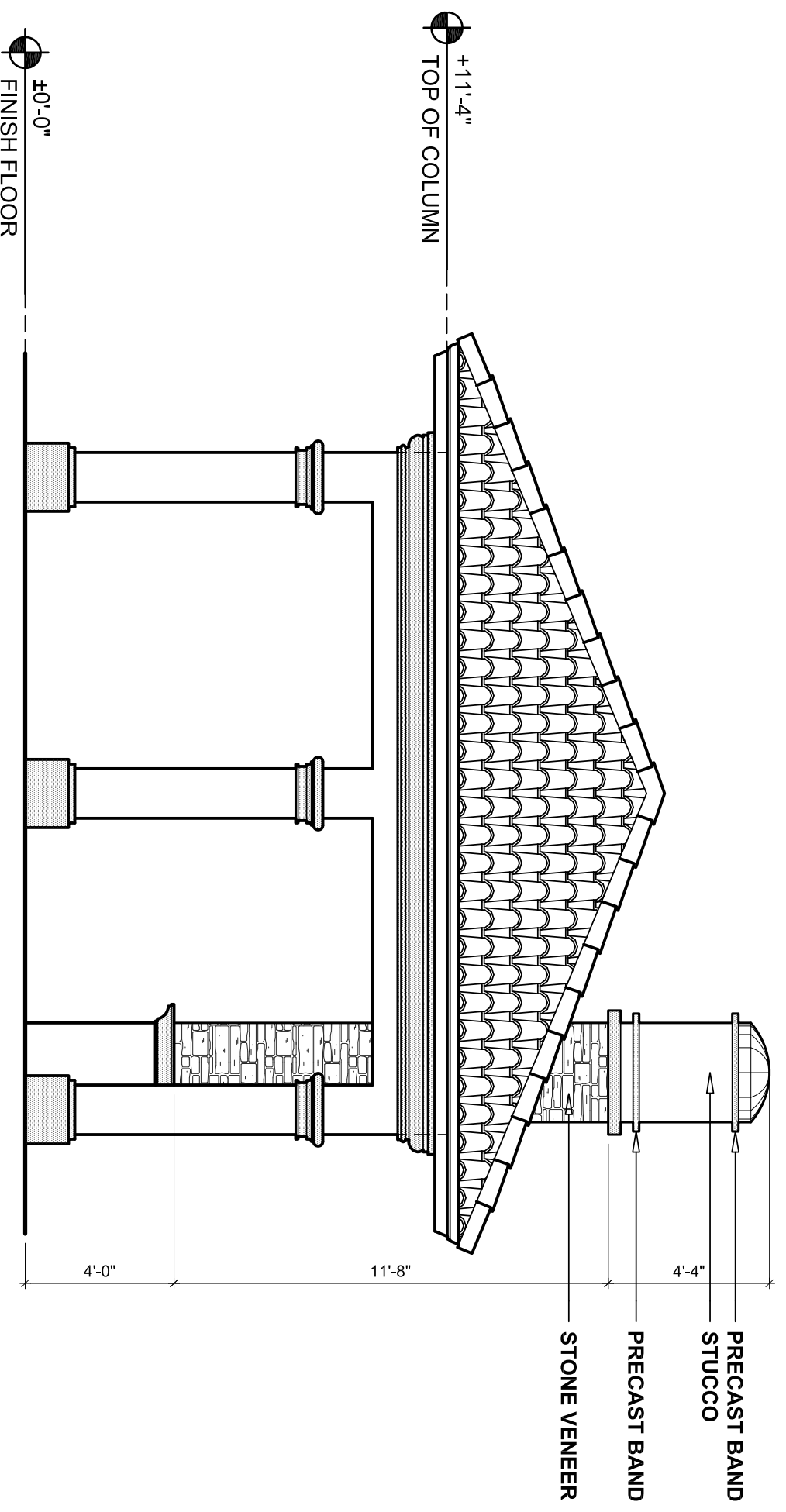


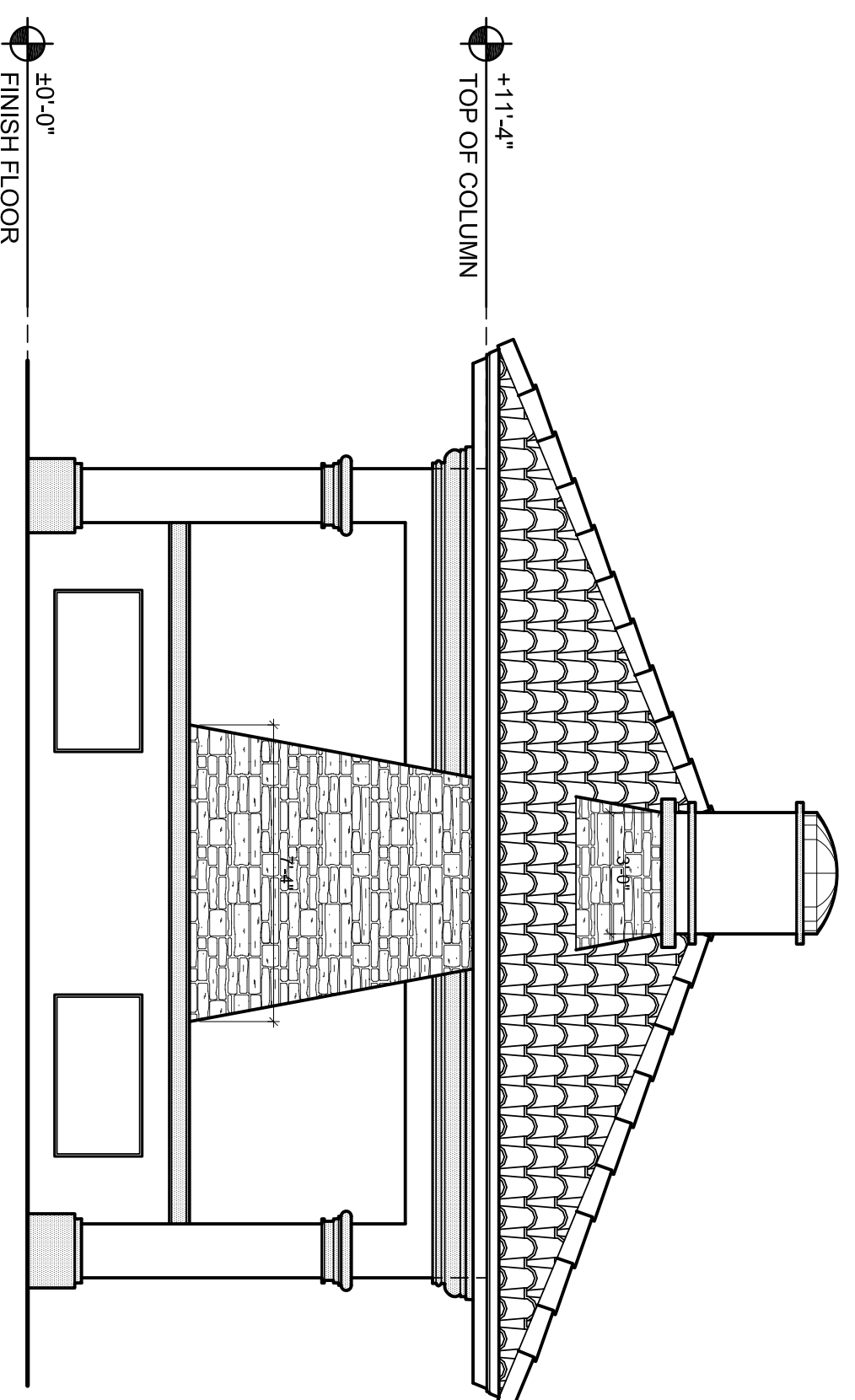
**FLOOR PLAN**  
SCALE: 1/4"=1'-0"



**FRONT ELEVATION**  
SCALE: 1/4"=1'-0"



**SIDE ELEVATION (TYP.)**  
SCALE: 1/4"=1'-0"



**REAR ELEVATION**  
SCALE: 1/4"=1'-0"

THIS DRAWING AND OTHER RELATED DOCUMENTS ARE INSTRUMENTS OF ARCHITECTURAL EDGE, INC. FOR USE SOLELY WITH RESPECT TO THIS PROJECT AND UNLESS OTHERWISE PROVIDED, THE ARCHITECT SHALL BE DEEMED THE AUTHOR OF THESE DOCUMENTS AND SHALL RETAIN ALL COMMON LAW, STATUTORY AND OTHER RESERVED RIGHTS, INCLUDING THE COPYRIGHT.

THE OWNER OR CONTRACTOR SHALL BE TOTALLY RESPONSIBLE FOR THE CONSTRUCTION PHASE OF THIS PROJECT AND STRICTLY FOLLOWS THE LOCAL BUILDING CODES AND ORDINANCES. THEY SHALL ALSO NOTIFY THE ARCHITECT IN WRITING FOR ANY ERRORS, OMISSIONS, OR NONCONFORMANCE OF SUCH CODES AND ORDINANCES IN THE CONSTRUCTION DOCUMENTS PRIOR TO COMMENCEMENT OF CONSTRUCTION.

THE ARCHITECT OF RECORD HAS NOT BEEN RETAINED AND IS NOT RESPONSIBLE FOR THE COORDINATION OF THE TRADES OR THEIR CONSTRUCTION METHODS, FIELD SUPERVISION, JOB SAFETY, COSTS, OR LENA LABOR REQUIREMENTS AND SUCH MATTERS SHALL BE THE ABSOLUTE RESPONSIBILITY OF THE OWNER, GENERAL CONTRACTOR, OR THEIR DESIGNEE.

PROJ. NAME: **THE PRESERVE AT CORKSCREW "POOL CABANA"**  
LEE COUNTY, FLORIDA  
DESCRIPTION: **FLOOR PLAN & ELEVATIONS**

DATE: AUGUST 10, 2011  
PROJ. NO.:  
CAD FILE:  
SCALE: AS NOTED  
DRAWN: JCR  
CHECKED: T.L.M.

I CERTIFY THAT THESE PLANS CONFORM TO LOCAL BUILDING CODE REQUIREMENTS

AR 0091726

REV.	DESCRIPTION