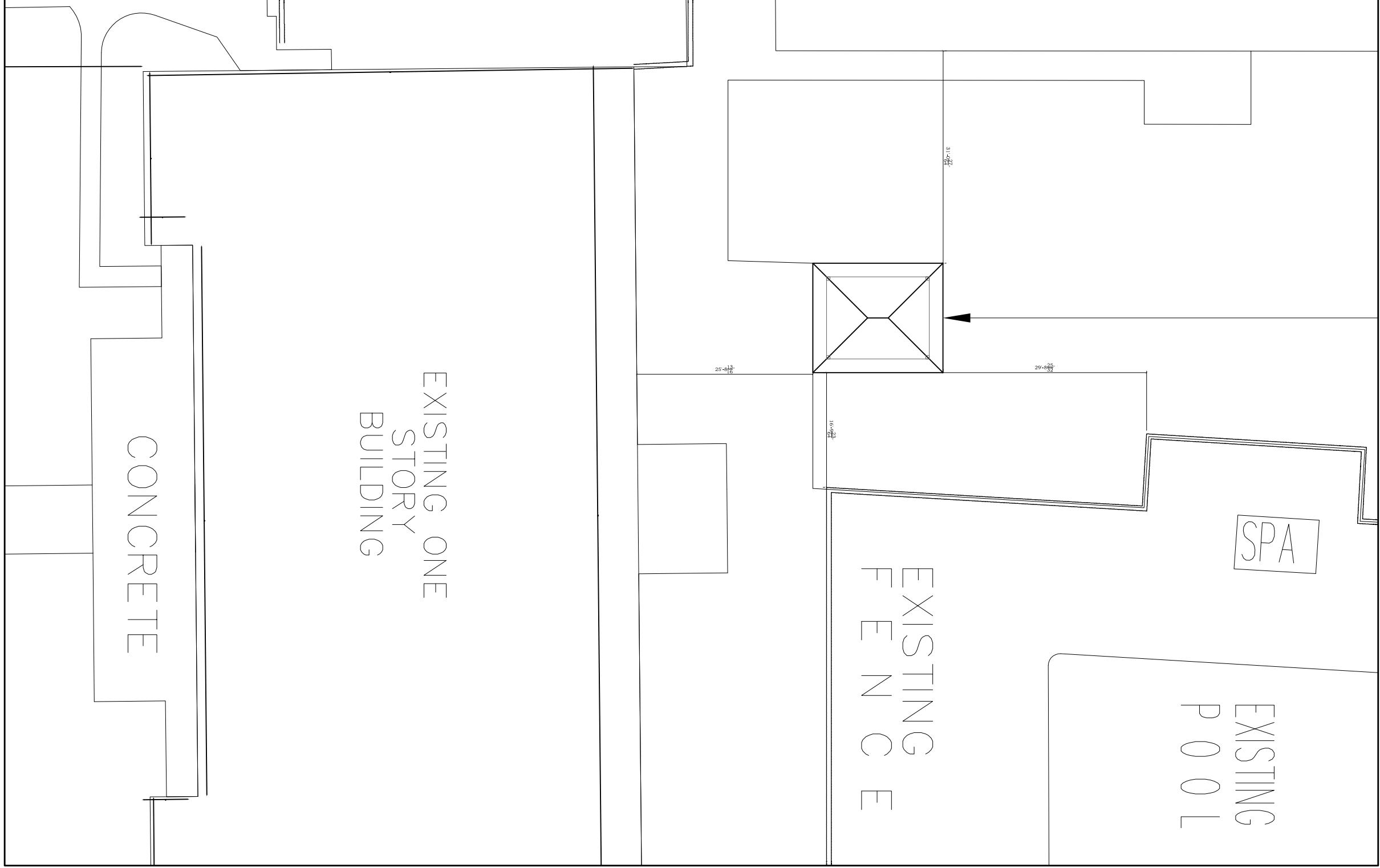


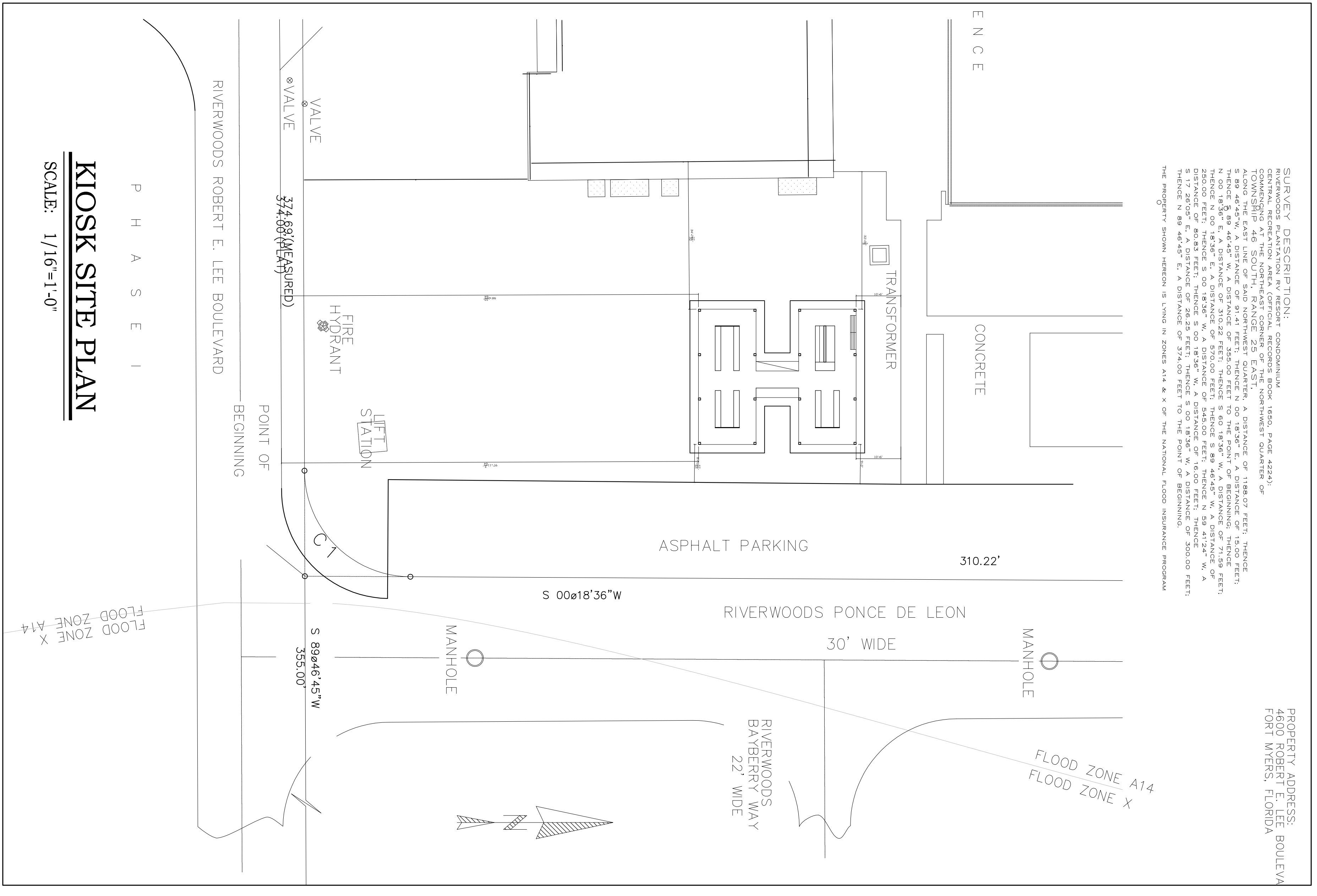
**OVERALL SITE PLAN**

SCALE: N/A



**PAVILION SITE PLAN**

SCALE: 1/16"=1'-0"



**KIOSK SITE PLAN**

SCALE: 1/16"=1'-0"

**SURVEY DESCRIPTION:**  
 RIVERWOODS PLANTATION RV RESORT CONDOMINIUM 1950, PAGE 422(4)  
 COMMENCING AT THE NORTHEAST CORNER OF THE NORTHWEST QUARTER OF  
 SECTION 14, TOWNSHIP 30 NORTH, RANGE 22 WEST, COUNTY OF  
 HIGHLAND COUNTY, FLORIDA, A DISTANCE OF 1188.07 FEET, THENCE  
 S 89°46'45"W, A DISTANCE OF 81.41 FEET, THENCE N 00°18'36"E, A DISTANCE OF 15.00 FEET,  
 N 00°18'36"E, A DISTANCE OF 310.22 FEET, THENCE S 89°46'45"W, A DISTANCE OF 71.55 FEET,  
 N 00°18'36"E, A DISTANCE OF 310.22 FEET, THENCE S 89°46'45"W, A DISTANCE OF  
 71.55 FEET, THENCE N 00°18'36"E, A DISTANCE OF 81.41 FEET, THENCE S 89°46'45"W, A DISTANCE OF  
 15.00 FEET, THENCE N 00°18'36"E, A DISTANCE OF 310.22 FEET, THENCE S 89°46'45"W, A DISTANCE OF  
 71.55 FEET, THENCE N 00°18'36"E, A DISTANCE OF 81.41 FEET, THENCE S 89°46'45"W, A DISTANCE OF  
 15.00 FEET, THENCE N 00°18'36"E, A DISTANCE OF 310.22 FEET TO THE POINT OF BEGINNING.  
 THE PROPERTY SHOWN HEREON IS WITHIN ZONES A14 & X OF THE NATIONAL FLOOD INSURANCE PROGRAM

**PROPERTY ADDRESS:**  
 4600 ROBERT E. LEE BOULEVARD  
 FORT MYERS, FLORIDA