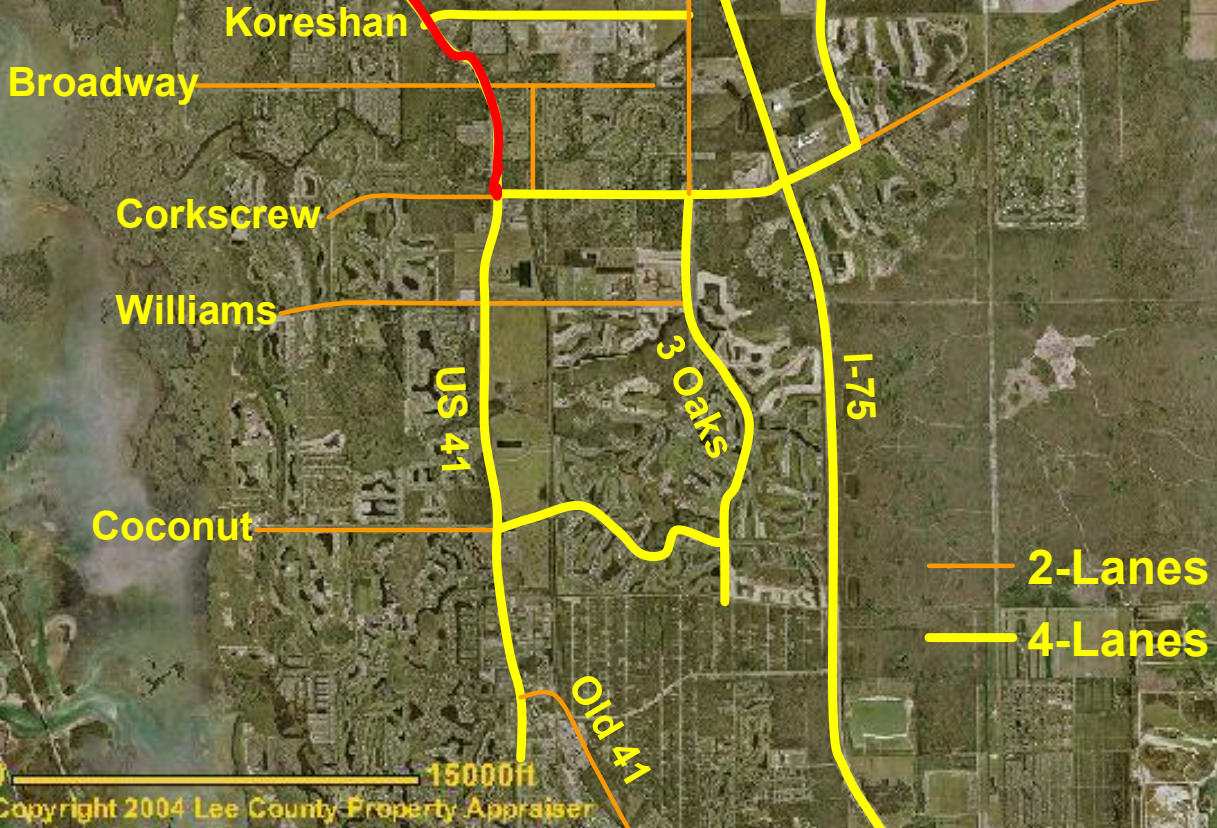


US 41 from Corkscrew Road to San Carlos Blvd



Traffic Lanes 2005: 14 N/S

Koreshan
Broadway

Corkscrew

Williams

Coconut

US 41

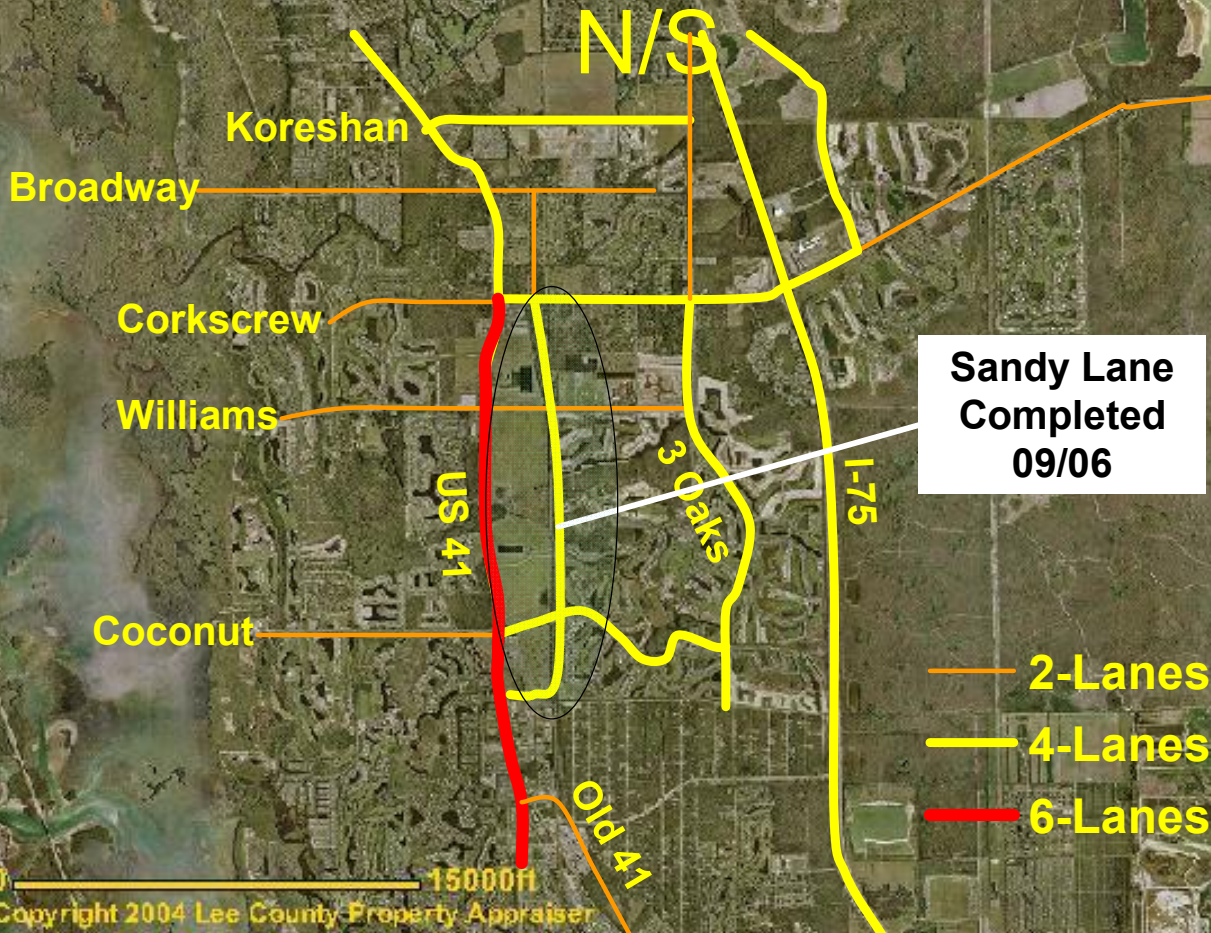
3 Oaks

I-75

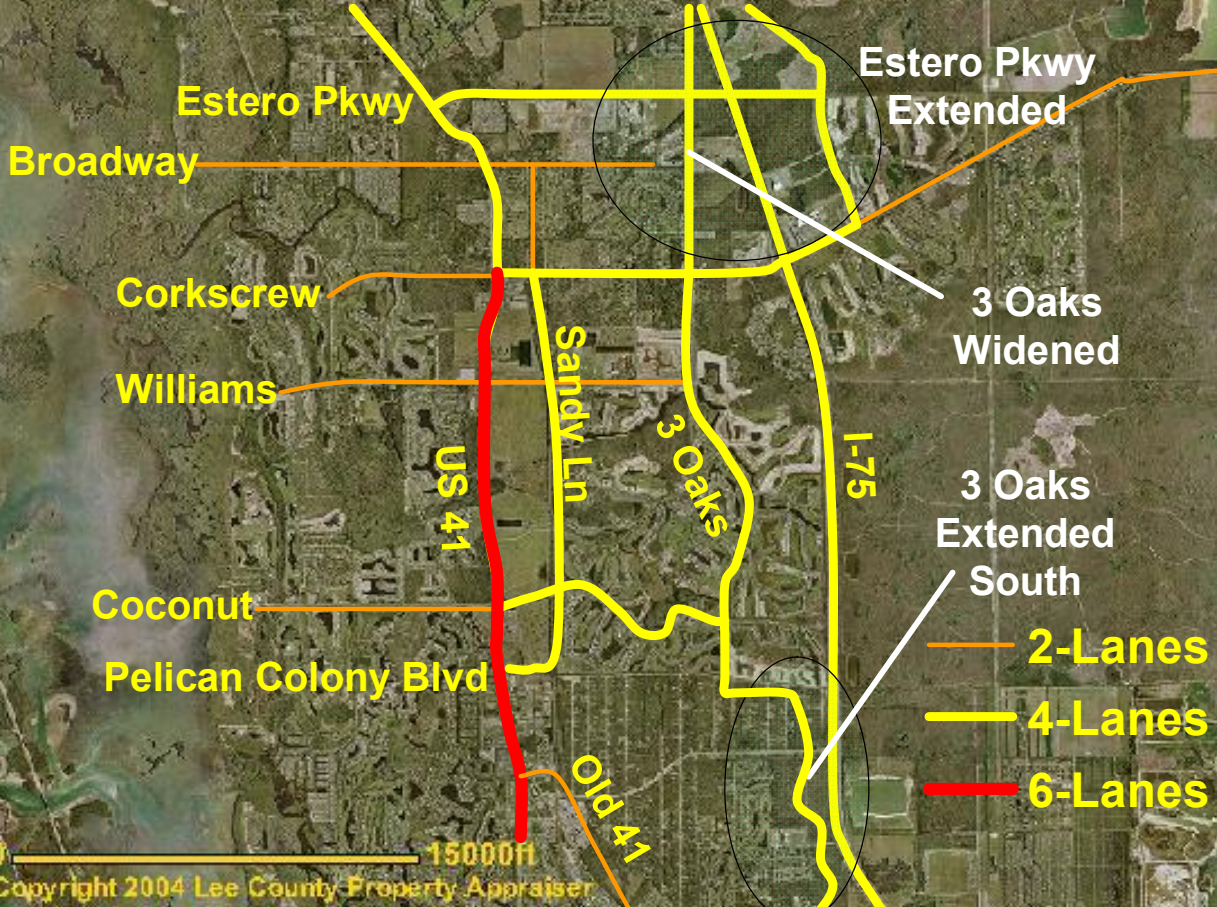
Old 41

- 2-Lanes
- 4-Lanes
- 6-Lanes

Traffic Lanes Late 2006: 18



Traffic Lanes 2007: 18 N/S



Traffic Lanes 2010: 20 N/S

