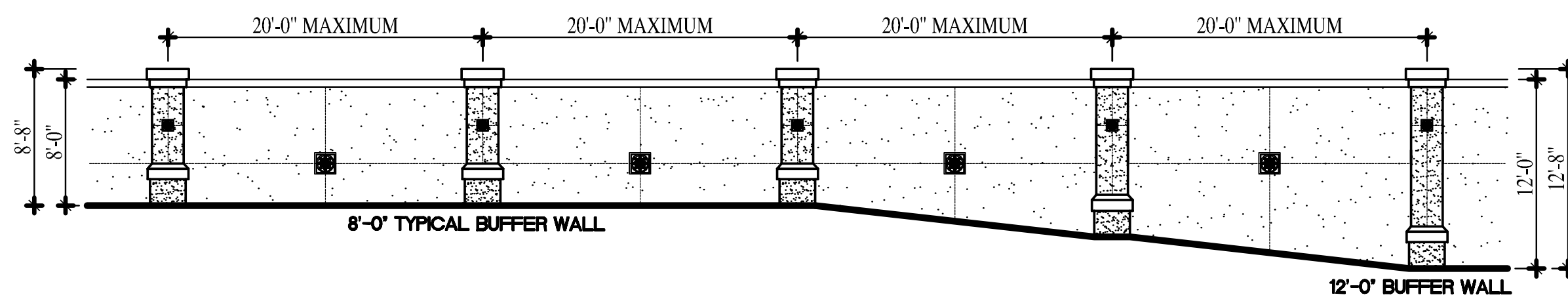


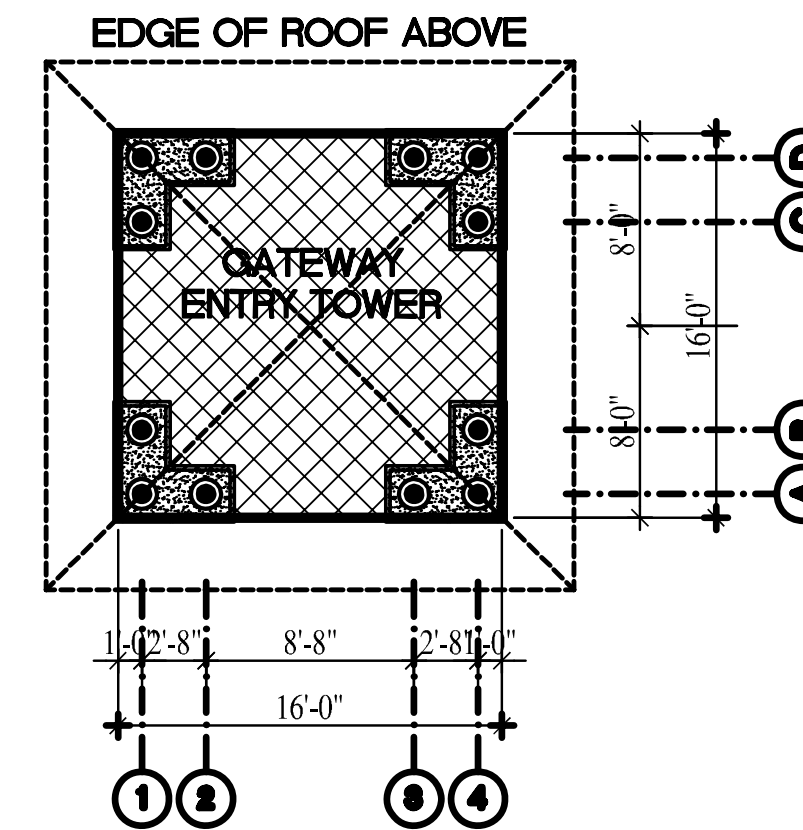
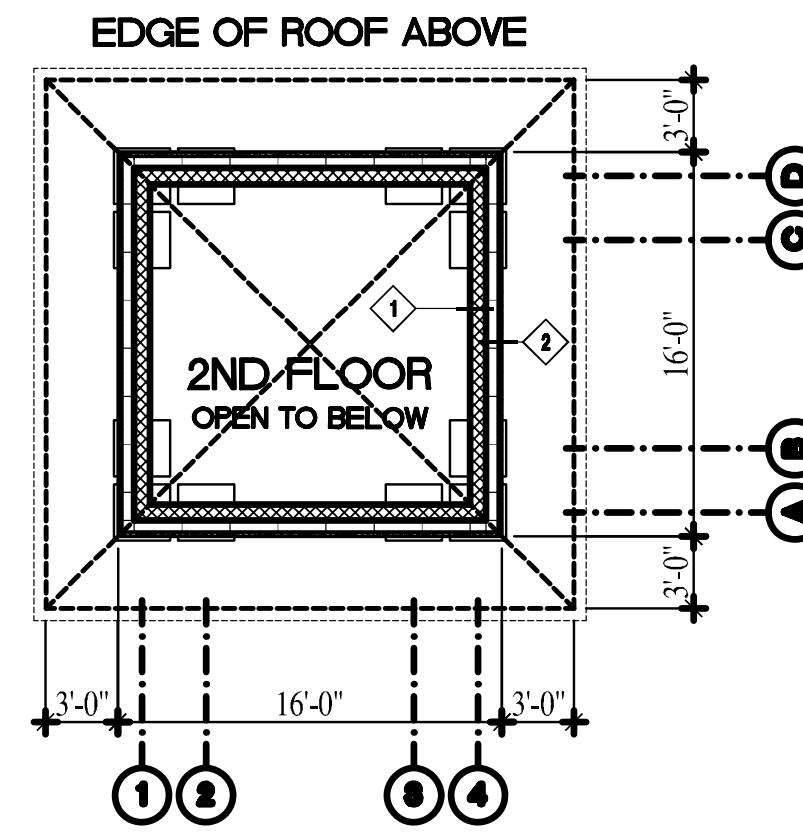
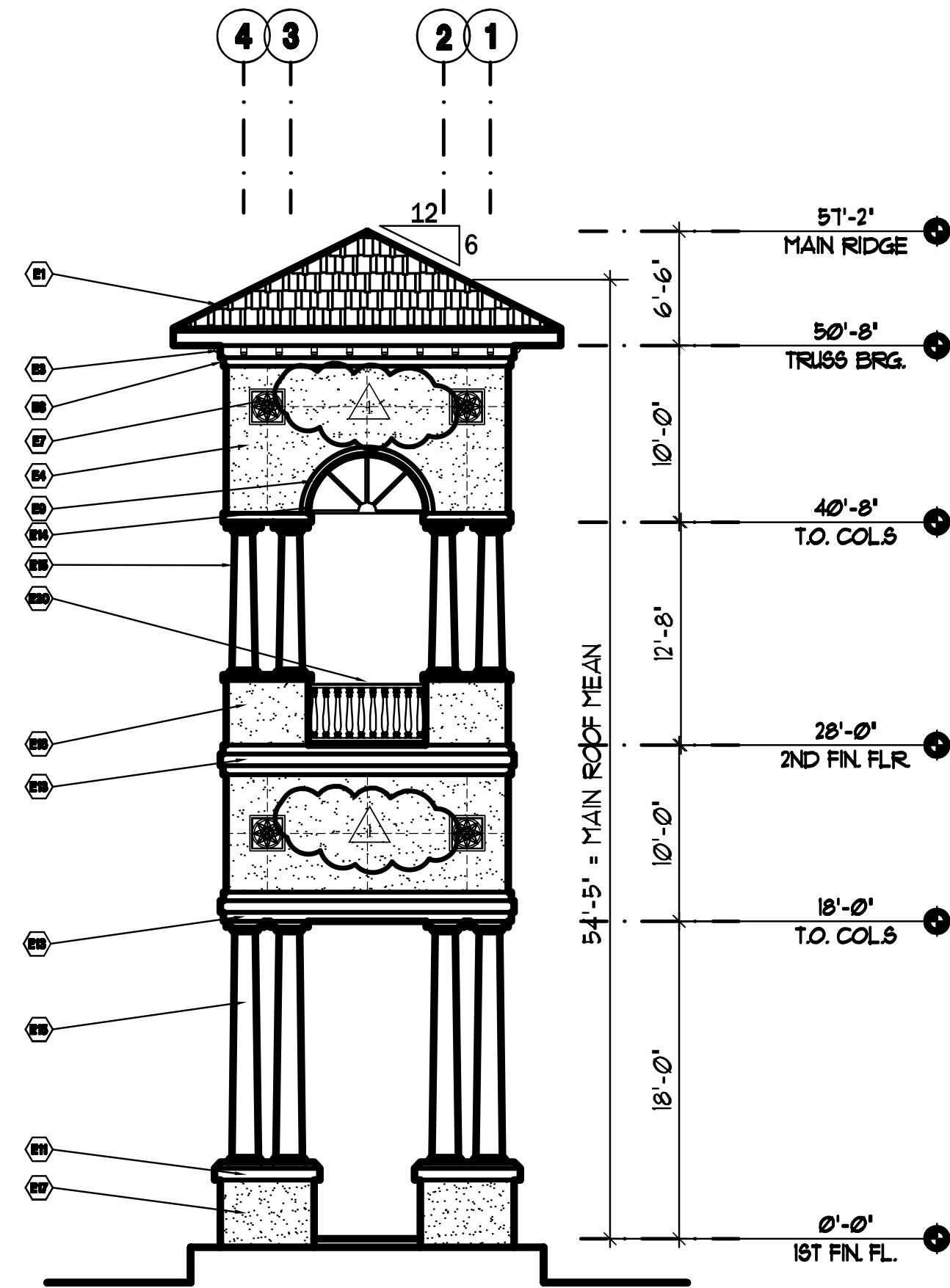
# EXTERIOR ELEVATIONS

## KEYNOTE DESCRIPTIONS:

- E1** CONCRETE BARREL TILE ROOFING- SEE COLOR ELEV. COORD. COLOR / FINISH WITH ARCHITECT
- E2** 6" x 8" WHITE ALUMINUM GUTTERS W/ 5" SQ. DOWNSPOUTS DIRECTLY CONNECTED TO THE STORM SEWER SYSTEM COORDINATE WITH CIVIL DRAWINGS AND ARCHITECT
- E3** DECORATIVE DENTIL MOLDING WITH SMOOTH STUCCO FINISH @ 2'-0" O.C. TYP. - SEE BLDG. COLOR CHART FYPON #081300 OVER RAISED FOAM BANDING
- E4** APPLIED "PINEAPPLE GROVE" "COMPASS MEDALLIONS" - SEE BLDG. COLOR CHART 24" SQUARE OVER 3/4" SMOOTH STUCCO FINISH.
- E5** APPLIED "PINEAPPLE GROVE" "COMPASS MEDALLIONS" - SEE BLDG. COLOR CHART 16" SQUARE OVER 3/4" SMOOTH STUCCO FINISH.
- E6** APPLIED "PINEAPPLE GROVE" "COMPASS MEDALLIONS" - SEE BLDG. COLOR CHART 12" SQUARE OVER 3/4" SMOOTH STUCCO FINISH.
- E7** VINYL CONTROL JOINTS & CORNER MOLDS AND STOPS PROVIDE ALL LOCATIONS PER ELEVATIONS / SPECS. FIELD VERIFY ALL LOCATIONS WITH ARCHITECT
- E8** SMOOTH STUCCO FINISH - SEE BLDG. COLOR CHART OVER STEPPED 2" THICK x 6" OVER 8" WIDE RAISED FIBER-MESH REINFORCED FOAM BANDS UNDER SOFFIT
- E9** SMOOTH STUCCO FINISH - SEE BLDG. COLOR CHART OVER 2" x 6" THICK FIBER-MESH REINFORCED FOAM BANDING AT WINDOW HEADS - CONTINUOUS
- E10** 3/4" LIGHT SKIP TROWEL STUCCO FINISH - FIELD COLOR OVER EXTERIOR CMU WALLS - SEE COLOR CHART
- E11** SMOOTH STUCCO FINISH - SEE COLOUR CHART OVER 4" THICK x 12" WIDE FIBER-MESH REINFORCED RAISED FOAM KNEE WALL CANTED COPING BAND / STOREFRONT SILL
- E12** SMOOTH STUCCO FINISH - FIELD COLOR OVER 2" THICK FIBER-MESH REINFORCED FOAM THICKENED WALL BASE UNDER CANTED WINDOW SILL BAND - CONTINUOUS
- E13** DARK BRONZE STOREFRONT SYSTEM - WITH GREY TINTED IMPACT RESISTANT GLASS
- E14** DARK BRONZE STOREFRONT FIXED ARCHED TRANSOM WITH IMPACT RESISTANT GREY TINTED GLASS IN UPPER EXTERIOR WALL OF ENTRY TOWERS
- E15** WHITE PRE-CAST DECORATIVE ROUND COLUMN WRAPS AROUND ROUND CONCRETE COLUMNS - SMOOTH FINISH
- E16** DECORATIVE RAISED WINDOW SILL & HEAD PRE-CAST MOLDINGS WITH SMOOTH FINISH - SEE BLDG. COLOR CHART PROVIDE 2" X 6" RAISED TRIM BANDS WITH 4" RAISED KEYSTONES
- E17** COLUMN PEDESTAL CONSTRUCTION: SEE COLOR CHART - SMOOTH 3/4" STUCCO FINISH OVER FILLED CELL CMU SQUARE OR L-SHAPED BASES AT COLUMN LOCATIONS PER FLOOR PLAN AND ELEVATIONS. ANCHOR TO STRUCTURAL COLUMNS. PROVIDE 2-PIECE WHITE PRE-CAST PEDESTAL CAPS WITH ROUNDED 2" LIP OVERHANG ABOVE CMU BASE. SLOPE TO DRAIN - TYP.
- E18** ENTRY TOWER TENANT SIGNAGE: PROVIDE NON-LIGHTED, DARK BRONZE, 16" TALL LETTERS ON ENTRY TOWERS WITH 8" TALL NUMERIC ADDRESS NUMBERS BY GEMINI INC. " ARCHITECTURAL STYLE" WITH PRISMATIC FACE. PROVIDE SIGNAGE PACKAGE FOR REVIEW TO MEET ALL SIGN ORDINANCES.
- E19** TYPICAL TENANT SIGNAGE: PROVIDE NON-LIGHTED, DARK BRONZE, 12" TALL LETTERS ON RECESSED STUCCO SURFACE ABOVE STOREFRONT WINDOWS, BY GEMINI INC. " ARCHITECTURAL STYLE" WITH PRISMATIC FACE. PROVIDE SIGNAGE PACKAGE FOR REVIEW TO MEET ALL SIGN ORDINANCES.
- E20** 2ND FLOOR BALCONY DECORATIVE RAILING CONSTRUCTION: PROVIDE FYPON ORNAMENTAL RAILINGS 42" HIGH WITH 4" WIDE TOP AND BOTTOM RAILS AND CURVED PICKETS WITH COLORED FINISH. SEE BLDG. COLOR CHART.



**BUFFER WALL ELEVATION**  
SCALE: 1/8" = 1' - 0"



## GATEWAY ENTRY TOWER: TYPE - F : TYPE-VB, NOT-SPRINKLERED

SCALE: 1/8" = 1' - 0"

### FLOOR PLAN: KEY-NOTES

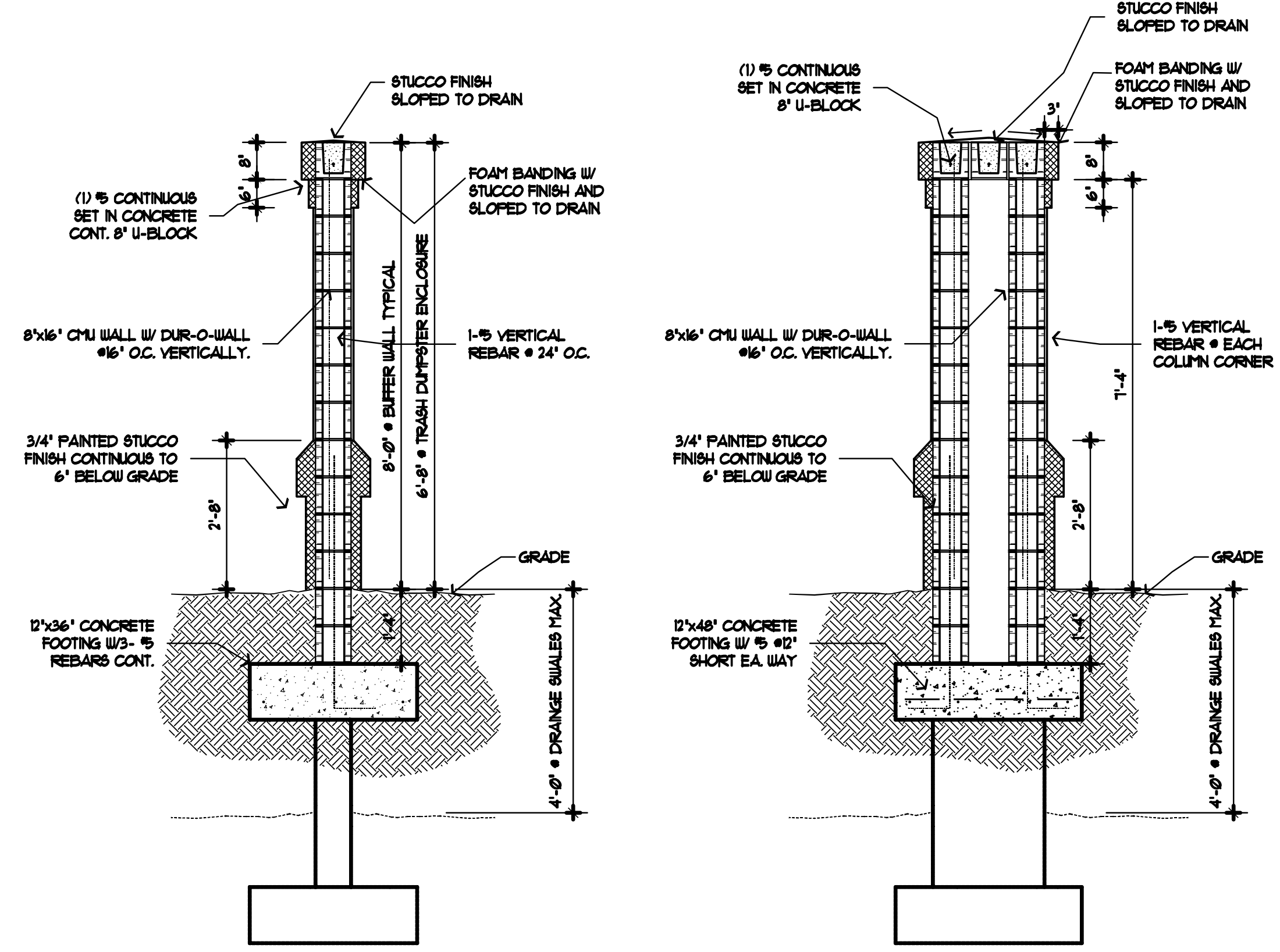
- 1** PROVIDE 16" SQUARE, SLIP-RESISTANT, THIN-SET, CERAMIC, TILE FINISH AT ALL EXTERIOR ENTRY AREAS. SLOPE TO DRAIN. SEE SPECS FOR TYPE AND COLORS.
- 2** PROVIDE WHITE PRE-FABRICATED ROUND DECORATIVE COLUMN WRAPS AROUND STRUCTURAL COLUMNS. SEE SPECS AND EXTERIOR ELEVATIONS FOR TYPE AND COLORS.
- 3** PROVIDE 8" DIA. ROUND EXTERIOR CONCRETE STRUCTURAL COLUMNS WITH CONCRETE BEAMS ABOVE . SEE EXTERIOR ELEVATIONS FOR HEIGHTS. 1-HOUR FIRE RATED

### WALL TYPE / PARTITION TYPE: KEY-NOTES

- PARTITION TYPE 1**  
1-HOUR RATED EXTERIOR 8" CMU WALL  
SEE EQ. THICKNESS DETAIL ON SHEET A7.0  
- INSTALL CMU DAMPPROOFING TO THE CMU INTERIOR WALL FACE PER SPECS.
- EXTERIOR WALL TYPE 2**  
PROVIDE 3/4" LIGHT SKIP STUCCO FINISH OVER TYVEK BUILDING PAPER ON SELF FURRING LATH ATTACHED TO 5/8" EXTERIOR PLYWOOD SHEATHING MOUNTED TO 8" METAL STUDS AT 24" O.C. MAX. ANCHORED TO 8" CMU WALL BENEATH TYPICAL.

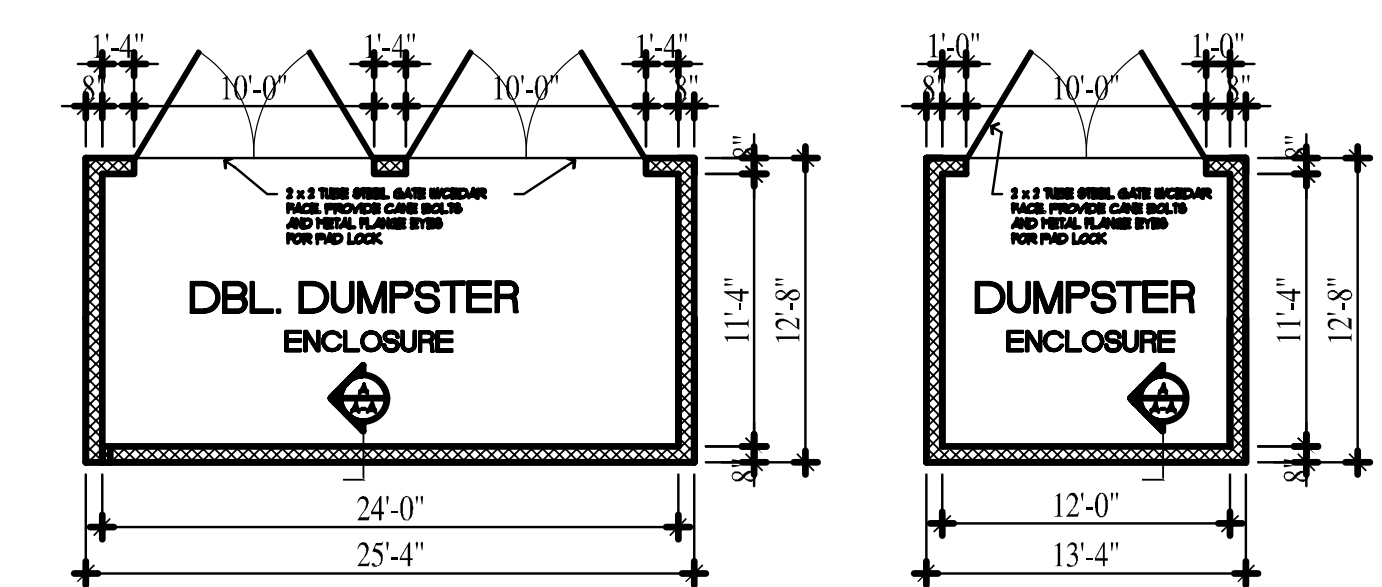
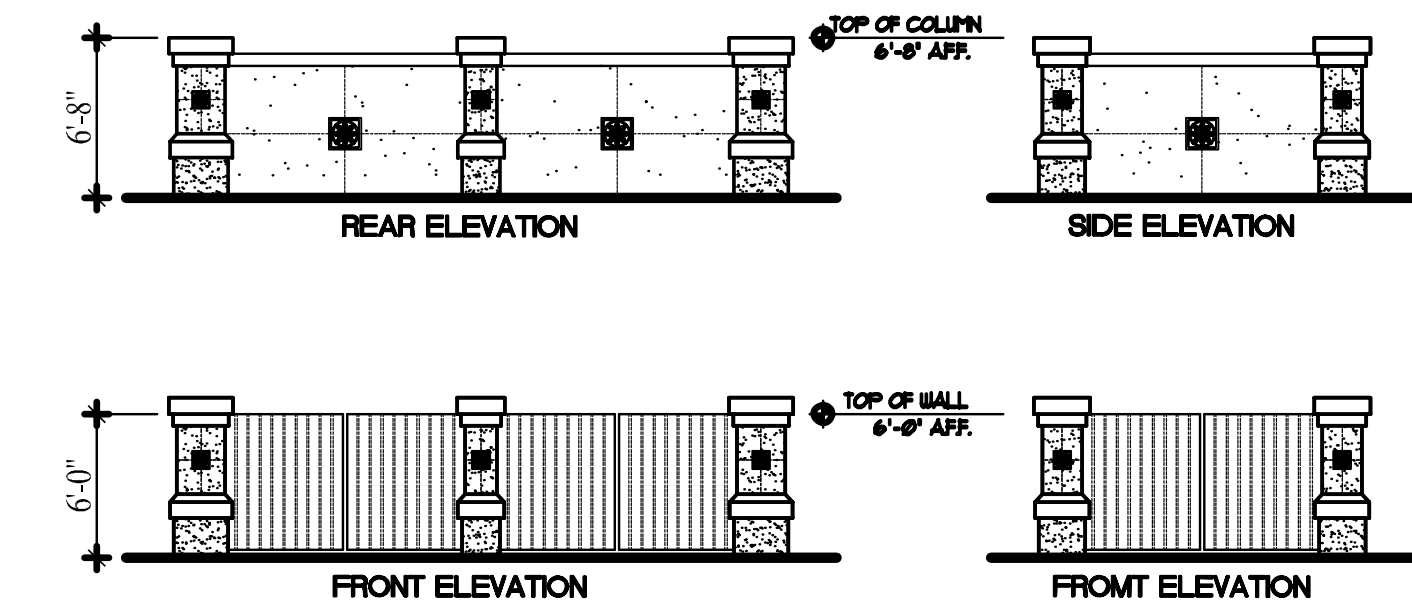
### ROOF / CEILING CONSTRUCTION: NOTES

- ROOF CONSTRUCTION:**  
PROVIDE CONCRETE BARREL TILE ROOFING ON PRE-ENGINEERED WOOD ROOF TRUSSES WITH 36" OVERHANG TYPICAL. PROVIDE EXTERIOR GYPSUM CEILING WITH SMOOTH STUCCO FINISH OVER 5/8" EXTERIOR PLYWOOD SHEATHING AT BOTTOM OF ROOF TRUSSES TYPICAL.



**WALL SECTION**  
SCALE: 1/2" = 1' - 0"

**COLUMN SECTION**  
SCALE: 1/2" = 1' - 0"



## DUMPSTER ENCLOSURES

SCALE: 1/8" = 1' - 0"

BUILDING FLOOR AREAS	
TYPE - F : TOTAL GROSS SLAB FLOOR AREA:	256 SF
WALL TYPE LEGEND	
	1 - HOUR RATED - 8" CMU WALL: EQ. THICKNESS
	1 - HOUR RATED - METAL STUD WALL: U.L. #U425
	METAL STUD WALL: SEE PARTITION TYPES / SPECS

REVISIONS	
1	D.O. - REVIEW #1 REVISION 11-21-2008

© 2008 Jerald C. Owen Architect Inc. This drawing is copyrighted and cannot be reproduced in part or in whole without the written consent from the Architect.

**JERALD C. OWEN • ARCHITECT INC.**  
1680 MARAVILLA AVE. FORT MYERS, FL. 33901  
OFFICE: (239) 482-7402 FAX: (239) 482-5381  
FLORIDA CORPORATION # AA26000855, FLORIDA LICENSE # AR13244

SCHEMATIC DESIGN DOCUMENTS FOR:  
**Pawlet Plaza Office Building: Type - F**  
by : Pawlet Associates LLC  
Three Oaks Parkway, Estero Florida

JCO

JOB:	0814
DATE:	07-09-2008
CAD REF:	0814-F1.0R1
DRAWN BY:	JCO

SHEET  
**F1.0R1**