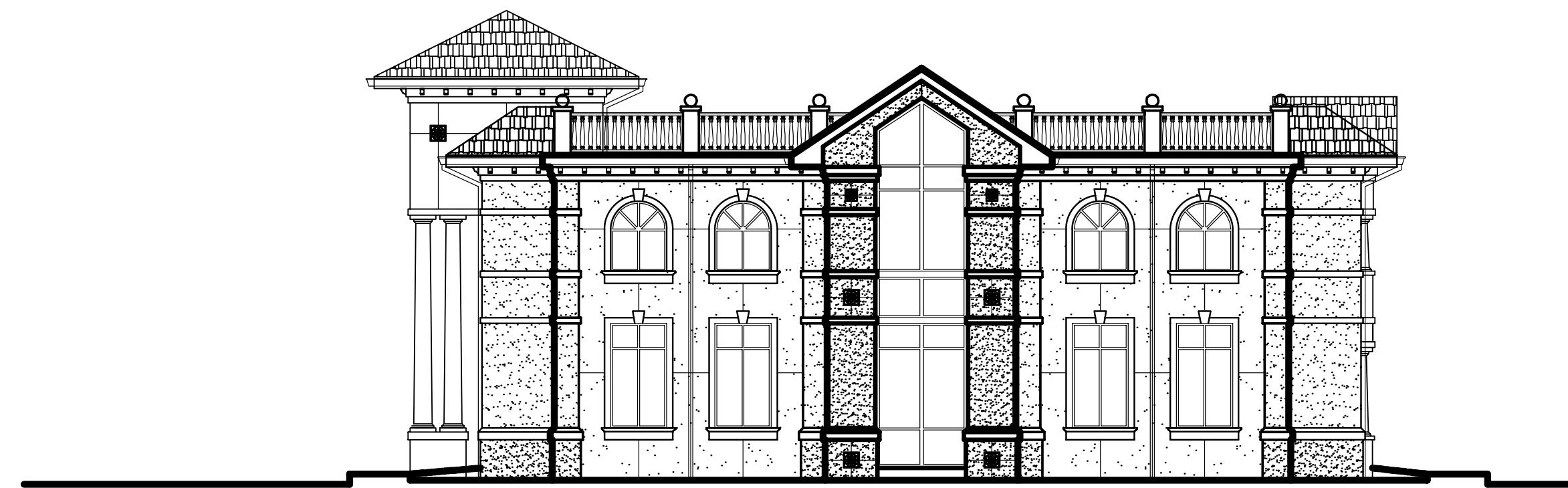


**EXTERIOR ELEVATIONS
KEYNOTE DESCRIPTIONS:**

- E1** CONCRETE BARREL TILE ROOFING- SEE COLOR ELEV.S
COORD. COLOR / FINISH WITH ARCHITECT
- E2** 6" x 8" WHITE ALUMINUM GUTTERS W/5" SQ. DOWNSPOUTS
DIRECTLY CONNECTED TO THE STORM SEWER SYSTEM
COORDINATE WITH CIVIL DRAWINGS AND ARCHITECT
- E3** DECORATIVE DENTIL MOLDING WITH SMOOTH
STUCCO FINISH @ 2'-0" O.C. TYP. - SEE BLDG. COLOR CHART
FYPON #081300 OVER RAISED FOAM BANDING
- E4** APPLIED "PINEAPPLE GROVE"
"COMPASS MEDALLIONS" - SEE BLDG. COLOR CHART
24" SQUARE OVER 3/4" SMOOTH STUCCO FINISH.
- E5** APPLIED "PINEAPPLE GROVE"
"COMPASS MEDALLIONS" - SEE BLDG. COLOR CHART
16" SQUARE OVER 3/4" SMOOTH STUCCO FINISH.
- E6** APPLIED "PINEAPPLE GROVE"
"COMPASS MEDALLIONS" - SEE BLDG. COLOR CHART
12" SQUARE OVER 3/4" SMOOTH STUCCO FINISH.
- E7** VINYL CONTROL JOINTS & CORNER MOLDS AND STOPS
PROVIDE ALL LOCATIONS PER ELEVATIONS / SPEC.S
FIELD VERIFY ALL LOCATIONS WITH ARCHITECT
- E8** SMOOTH STUCCO FINISH - SEE BLDG. COLOR CHART
OVER STEPPED 2" THICK x 6" OVER 8" WIDE RAISED
FIBER-MESH REINFORCED FOAM BANDS UNDER SOFFIT
- E9** SMOOTH STUCCO FINISH - SEE BLDG. COLOR CHART
OVER 2" x 6" THICK FIBER-MESH REINFORCED
FOAM BANDING AT WINDOW HEADS - CONTINUOUS
- E10** 3/4" LIGHT SKIP TROWEL STUCCO FINISH - FIELD COLOR
OVER EXTERIOR CMU WALLS - SEE COLOR CHART
- E11** SMOOTH STUCCO FINISH - SEE COLOUR CHART OVER
4" THICK x 12" WIDE FIBER-MESH REINFORCED RAISED FOAM
KNEE WALL CANTED COPING BAND / STOREFRONT SILL
- E12** SMOOTH STUCCO FINISH - FIELD COLOR OVER 2" THICK
FIBER-MESH REINFORCED FOAM THICKENED WALL BASE
UNDER CANTED WINDOW SILL BAND - CONTINUOUS
- E13** DARK BRONZE STOREFRONT SYSTEM - WITH
GREY TINTED IMPACT RESISTANT GLASS
- E14** DARK BRONZE STOREFRONT FIXED ARCHED TRANSOM
WITH IMPACT RESISTANT GREY TINTED GLASS
IN UPPER EXTERIOR WALL OF ENTRY TOWERS
- E15** WHITE PRE-CAST DECORATIVE ROUND COLUMN WRAPS
AROUND ROUND CONCRETE COLUMNS - SMOOTH FINISH
- E16** DECORATIVE RAISED WINDOW SILL & HEAD PRE-CAST
MOLDINGS WITH SMOOTH FINISH - SEE BLDG. COLOR CHART
PROVIDE 2" X 6" RAISED TRIM BANDS WITH 4" RAISED KEYSTONES
- E17** COLUMN PEDESTAL CONSTRUCTION:
SEE COLOR CHART - SMOOTH 3/4" STUCCO FINISH OVER
FILLED CELL CMU SQUARE OR L-SHAPED BASES AT
COLUMN LOCATIONS PER FLOOR PLAN AND
ELEVATIONS. ANCHOR TO STRUCTURAL COLUMNS.
PROVIDE 2-PIECE WHITE PRE-CAST PEDESTAL CAPS
WITH ROUNDED 2" LIP OVERHANG ABOVE CMU BASE,
SLOPE TO DRAIN - TYP.
- E18** ENTRY TOWER TENANT SIGNAGE:
PROVIDE NON-LIGHTED, DARK BRONZE, 16" TALL
LETTERS ON ENTRY TOWERS WITH 8" TALL NUMERIC
ADDRESS NUMBERS BY GEMINI INC. " ARCHITECTURAL
STYLE" WITH PRISMATIC FACE. PROVIDE SIGNAGE
PACKAGE FOR REVIEW TO MEET ALL SIGN ORDINANCES.
- E19** TYPICAL TENANT SIGNAGE:
PROVIDE NON-LIGHTED, DARK BRONZE, 12" TALL
LETTERS ON RECESSED STUCCO SURFACE ABOVE
STOREFRONT WINDOWS, BY GEMINI INC. " ARCHITECTURAL
STYLE" WITH PRISMATIC FACE.
PROVIDE SIGNAGE PACKAGE FOR REVIEW TO MEET ALL
SIGN ORDINANCES.
- E20** 2ND FLOOR BALCONY DECORATIVE RAILING
CONSTRUCTION: PROVIDE FYPON ORNAMENTAL
RAILINGS 42" HIGH WITH 4" WIDE TOP AND BOTTOM
RAILS AND CURVED PICKETS WITH COLORED FINISH. SEE
BLDG. COLOR CHART.
- E21** TYPICAL ENTRY TOWER SIGNAGE:
PROVIDE BACK-LIGHTED, DARK BRONZE, 18" & 24" TALL
LETTERS ON SMOOTH STUCCO SURFACE ABOVE PER
ELEVATION. SEE PROVIDED LIGHTED SIGNAGE PACKAGE
FOR REVIEW. SIGNAGE TO MEET ALL SIGN ORDINANCES.



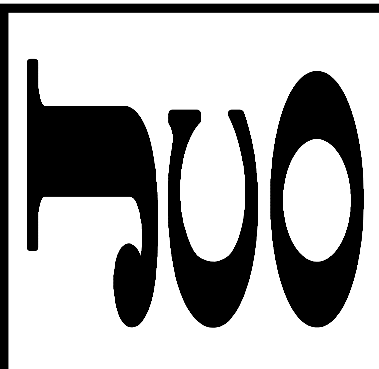
BUILDING #13 : TYPE - E : SCHEMATIC SOUTH ELEVATION
SCALE: 1/8" = 1' - 0"



BUILDING #13 : TYPE - E : SCHEMATIC NORTH ELEVATION
SCALE: 1/8" = 1' - 0"

REVISIONS

JERALD C. OWEN • ARCHITECT INC.
1680 MARAVILLA AVE. FORT MYERS, FL. 33901
OFFICE: (239) 482-7402 FAX: (239) 482-5381
FLORIDA CORPORATION # AA26000855, FLORIDA LICENSE # AR13244



SCHEMATIC DESIGN DOCUMENTS FOR:
Pawlet Plaza Office Building: Type - E
by : Pawlet Associates LLC
Three Oaks Parkway, Estero Florida

JOB:	0813
DATE:	07-09-2008
CAD REF:	0813-E3.0
DRAWN BY:	JCO

SHEET
E3.0