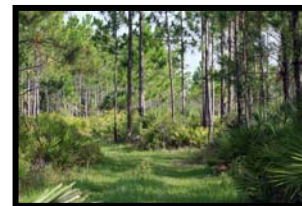
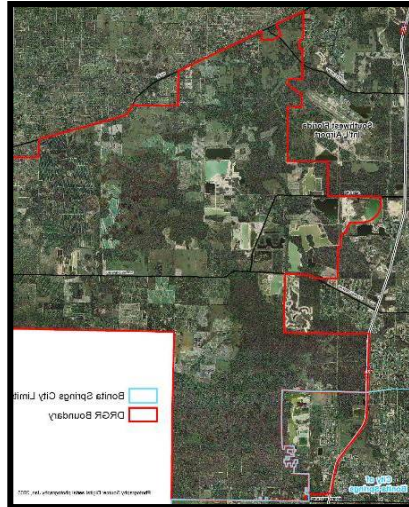
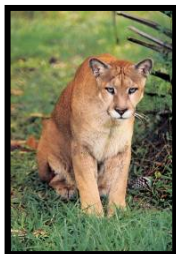


SUPPORT PROTECTION OF WATER SUPPLY, WETLANDS AND WILDLIFE IN SOUTHEAST LEE COUNTY!

THE 82,500 ACRES OF DENSITY REDUCTION/GROUNDWATER RESOURCE AREA (DR/GR) IN SOUTHEAST LEE COUNTY WAS SET ASIDE IN 1990 FOR LOW-DENSITY AND LOW-INTENSITY LAND USE, IN ORDER TO PROTECT THE DRINKING WATER SUPPLY AND NATURAL RESOURCES.

THE DR/GR:

- ✓ IS THE SOURCE FOR 70% OF LEE COUNTY'S WATER SUPPLY
- ✓ CONTAINS CORKSCREW REGIONAL ECOSYSTEM WATERSHED (CREW) LANDS AND IS ADJACENT TO CORKSCREW SWAMP SANCTUARY
- ✓ CONTAINS WETLAND SYSTEMS THAT ARE ESSENTIAL TO WATER SUPPLY AND WATER QUALITY WITHIN OUR ESTUARIES, INCLUDING ESTERO BAY
- ✓ CONTAINS HABITAT FOR THE ENDANGERED FL PANTHER, WOOD STORK AND OTHER LISTED SPECIES
- ✓ CONTAINS A MOSAIC OF LANDSCAPES, INCLUDING AGRICULTURE AND RURAL RESIDENCES



THE PROBLEM:

- ✓ THE DR/GR HAS BEEN EXTENSIVELY MINED, WITH 17,000 ACRES OF NEW MINE APPLICATIONS ALONG CORKSCREW ROAD PENDING
- ✓ MINES ARE LOCATED IN CLOSE PROXIMITY TO WATER SUPPLY RECHARGE AREAS AND WELLHEADS
- ✓ WILDLIFE CONTINUES TO BE NEGATIVELY IMPACTED FROM INTENSIVE TRAFFIC
- ✓ THE DR/GR CONTINUES TO SHRINK, AS INTENSIVE, LARGE-SCALE DEVELOPMENT ENCROACHES
- ✓ INTENSIVE USES, SUCH AS MINING AND HIGH-DENSITY RESIDENTIAL, ARE INCOMPATIBLE WITH THE ORIGINAL INTENT OF THE DR/GR

ON SEPTEMBER 24, THE LEE COUNTY COMMISSIONERS WILL VOTE ON A NEW PLAN FOR THE DR/GR. IF APPROVED AS RECOMMENDED BY COUNTY STAFF, IT WILL PROVIDE THE PROTECTION CURRENTLY LACKING IN THE DR/GR. THIS PLAN WILL CREATE:

1) FUTURE LIMEROCK MINING OVERLAY

NEW MINES WILL BE LOCATED WITHIN THE ALICO ROAD CORRIDOR, SEPARATED FROM OTHER LAND USES. THIS WILL TREMENDOUSLY REDUCE NEGATIVE IMPACTS TO GROUNDWATER RECHARGE, CONSERVATION AND EXISTING RESIDENTIAL USES WITHIN THE REMAINDER OF THE DR/GR.

2) HISTORIC SURFACE AND GROUNDWATER LEVELS OVERLAY

WATER RESOURCES WILL BE PROTECTED THROUGH ENSURING THAT NEW DEVELOPMENT MINICS SURFACE AND GROUNDWATER LEVELS FROM THE ESTABLISHED HISTORIC DATE OF 1953.

3) PRIORITY RESTORATION OVERLAY

LANDS IMPORTANT FOR FUTURE RESTORATION AND/OR ACQUISITION WILL BE IDENTIFIED AND PRIORITIZED.

4) TRANSFER OF DEVELOPMENT RIGHTS PROGRAM

RESIDENTIAL DEVELOPMENT CAN BE TRANSFERRED FROM ENVIRONMENTALLY-SENSITIVE AREAS TO MORE APPROPRIATE LOCATIONS WHERE SUSTAINABLE MIXED-USE DEVELOPMENT WILL BE ALLOWED.

THIS PROGRAM IS THE RESULT OF OVER TWO YEARS OF RESEARCH, DATA COMPILATION, PUBLIC PARTICIPATION AND STAKEHOLDER INPUT. LEE COUNTY STAFF WILL PRESENT THE DR/GR PROGRAM TO THE COMMISSION ON THURSDAY, **SEPTEMBER 24TH BEGINNING AT 9AM IN COMMISSION CHAMBERS.**

YOUR SUPPORT FOR THESE DR/GR AMENDMENTS IS NEEDED!

CONTACT THE COMMISSIONERS AND ATTEND THE HEARING. LET THEM KNOW YOU SUPPORT TRANSMITTAL OF THE DR/GR AMENDMENTS, AS PROPOSED BY STAFF, INCLUDING THESE FOUR CRITICAL COMPONENTS:

- FUTURE LIMEROCK MINING OVERLAY
- HISTORIC SURFACE AND GROUNDWATER LEVELS OVERLAY
- PRIORITY RESTORATION OVERLAY
- TRANSFER OF DEVELOPMENT RIGHTS PROGRAM

ALL FOUR OF THESE COMPONENTS MUST BE APPROVED IN ORDER FOR THE DR/GR PLAN TO SUCCESSFULLY PROTECT NATURAL RESOURCES, FUTURE WATER SUPPLY AND EXISTING RURAL COMMUNITIES.

Commissioner Contact:	Commissioner Bob Janes	dist1@leegov.com
	Commissioner Brian Bigelow	District2@leegov.com
	Commissioner Ray Judah	dist3@leegov.com
	Commissioner Tammy Hall	dist4@leegov.com
	Commissioner Frank Mann	dist5@leegov.com

Organizations supporting these DR/GR amendments include: Brooks Concerned Citizens, Calusa Group Sierra Club, Conservancy of Southwest Florida, Corkscrew Rural Community, Estero Civic Association, Estero Council of Community Leaders, Responsible Growth Management Coalition, Rotary Club of Estero, Stoneybrook Community Development District, Wildcat Run Community Association. Questions contact Nicole Ryan, Conservancy of SWFL, at (239) 402-4220.